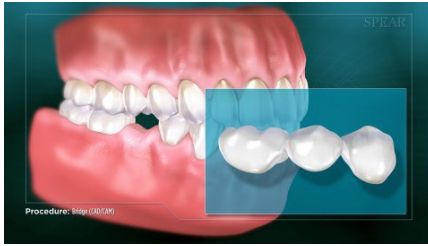


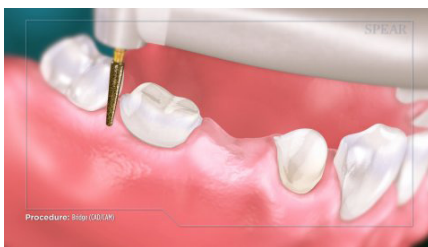
# Bridge (CAD/CAM)



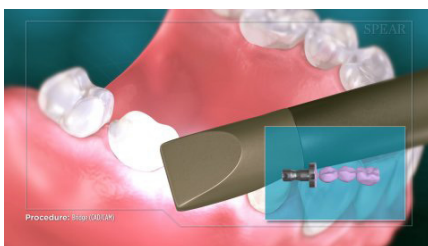
A bridge is used to replace a missing tooth. It uses teeth on either side of the missing tooth for support. It typically requires multiple appointments to complete the process of getting a bridge.



With a CAD/CAM bridge, your Doctor uses state-of-the-art technology to image your teeth in 3-D and aid in designing the restoration. It also makes it possible for you to complete your bridge in a single appointment.



To begin, the teeth on either side of the missing tooth are prepared. They will become the support structure for your new tooth.



Next, the prepared teeth are scanned, and creation of the bridge begins. It is then fabricated right in your doctor's office while you wait.



When the bridge is ready, your doctor will make final adjustments and cement it into place.



Once completed, the area is restored to optimal function and appearance.

